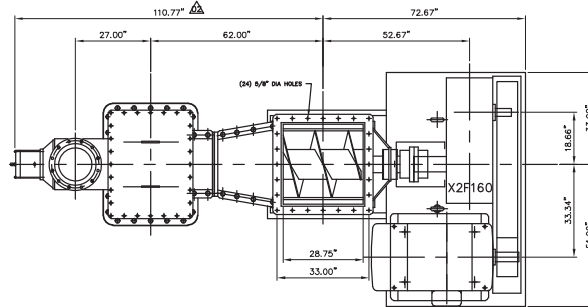
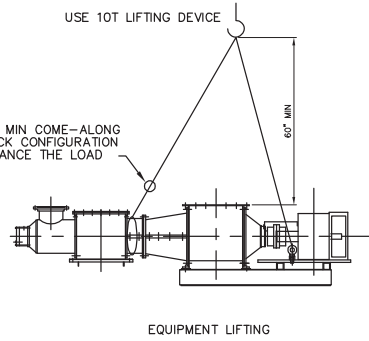


Rev.	Description	Revision	
		Drawn By	Approved
01	ISSUE FOR MFG	OK	DATE
02	REV. 10.17 WAS 10TAB	OK	DATE
03	REV. 10.17 WAS 10TAB	OK	DATE
04	REV. 11.13 WAS 10TAB	OK	DATE
05	REV. 11.13 WAS 10TAB	OK	DATE
06	REV. 11.13 WAS 10TAB	OK	DATE
07	REV. 11.13 WAS 10TAB	OK	DATE
08	REV. 11.13 WAS 10TAB	OK	DATE
09	REV. 11.13 WAS 10TAB	OK	DATE
10	REV. 11.13 WAS 10TAB	OK	DATE
11	REV. 11.13 WAS 10TAB	OK	DATE
12	REV. 11.13 WAS 10TAB	OK	DATE
13	REV. 11.13 WAS 10TAB	OK	DATE
14	REV. 11.13 WAS 10TAB	OK	DATE
15	REV. 11.13 WAS 10TAB	OK	DATE
16	REV. 11.13 WAS 10TAB	OK	DATE
17	REV. 11.13 WAS 10TAB	OK	DATE
18	REV. 11.13 WAS 10TAB	OK	DATE
19	REV. 11.13 WAS 10TAB	OK	DATE
20	REV. 11.13 WAS 10TAB	OK	DATE
21	REV. 11.13 WAS 10TAB	OK	DATE
22	REV. 11.13 WAS 10TAB	OK	DATE



**DRIVE**

MOTOR: 250 HP, 1750 RPM TEFC, 449T FRAME  
480V, 3PH, 60Hz  
INVERTER DUTY

V-BELT DRIVE: 1.52 : 1 REDUCTION  
GEAR REDUCER: SEW EURODRIVE  
X2F160, 18:1 REDUCTION

NOMINAL SPEED: 66 RPM  
SPEED RANGE: 48 - 97 RPM

**CAPACITY**

VOLUME / REVOLUTION (INLET) 45.0 L  
VOLUME / REVOLUTION (DISCHARGE) 22.5 L  
CAPACITY / REVOLUTION @ 110 KG/M3 5.46 BDST/D  
NET MAX. CAPACITY @ 110 KG/M3 530 BDST/D

**WEIGHTS**

PRE-COMPRESSION SCREW, COMPLETE 13400 LB  
GEAR REDUCER 2100 LB  
MOTOR 1800 LB

**MATERIALS OF CONSTRUCTION**

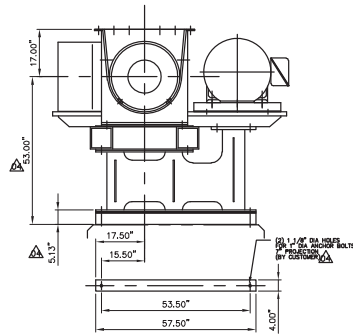
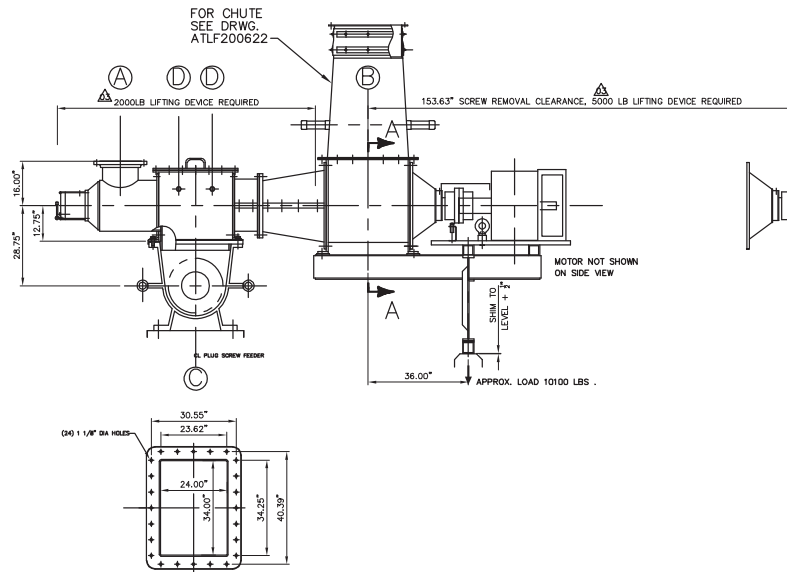
PARTS IN CONTACT WITH PROCESS SS 304L  
OTHER PARTS CARBON STEEL PAINTED

**NOZZLE SCHEDULE**

#	PURPOSE	SIZE/TYPE	QTY.
A	VENT	12" DIA 150#	1
B	INLET	28.75" X 28.75"	1
C	OUTLET	35.63" X 25.79"	1
D	INSTRUMENT/SPARE	1" NPT	4

**INSTALLATION**

1. PLACE THE PRE-COMPRESSION SCREW IN ITS POSITION.  
USE LEG TO SUPPORT THE DRIVE END
2. LEVEL THE SCREW BY SHIMMING UNDER THE FOOT.  
USE CARPENTERS LEVEL ON INLET FLANGE (NOZZLE B).
3. TIGHTEN THE DISCHARGE FLANGE BOLTS FINGER TIGHT + 1 REVOLUTION.
4. CORRECT THE LEVELING + ADD 1/2" SHIM UNDER THE FOOT
5. CORRECT COUPLING ALIGNMENT AND ADJUST O-SPEED SWITCH



SECTION A-A

Offered by Solutions 4 Mfg  
Asset B-1011 Pre-Compression  
Screw

REV.	DATE	BY	CHKD.	APP'D.
01	10/17/11	YTTA		
02	11/13/11	YTTA		
03	11/13/11	YTTA		
04	11/13/11	YTTA		
05	11/13/11	YTTA		
06	11/13/11	YTTA		
07	11/13/11	YTTA		
08	11/13/11	YTTA		
09	11/13/11	YTTA		
10	11/13/11	YTTA		
11	11/13/11	YTTA		
12	11/13/11	YTTA		
13	11/13/11	YTTA		
14	11/13/11	YTTA		
15	11/13/11	YTTA		
16	11/13/11	YTTA		
17	11/13/11	YTTA		
18	11/13/11	YTTA		
19	11/13/11	YTTA		
20	11/13/11	YTTA		
21	11/13/11	YTTA		
22	11/13/11	YTTA		